



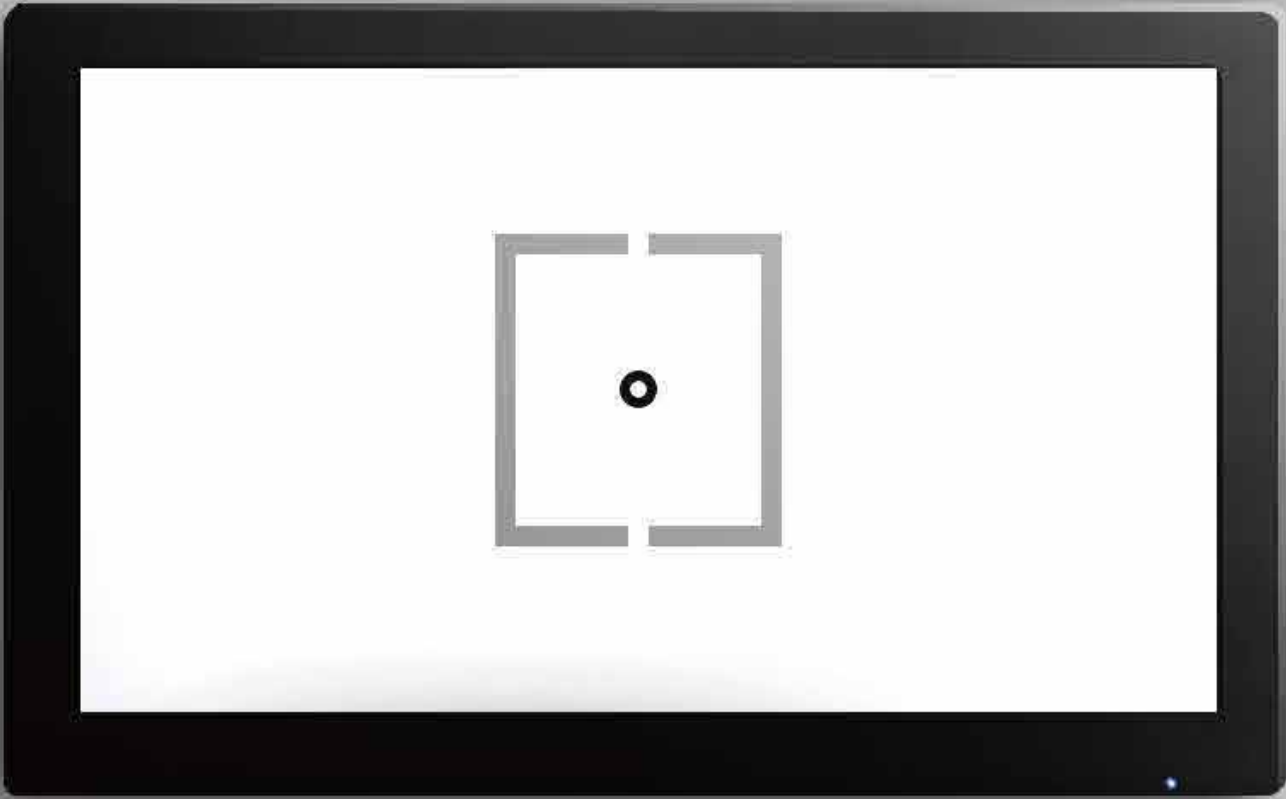
Specificaton

Measuring Range	
Screen	23'' LCD (Color) High resolution Monitor
	Resolution: 1920*1080 pixels
	Dot pitch: 0.2652mm
	Screen ratio: 16:9
	Visible Size: 513.8*291mm
Brightness	250cd/m <sup>2</sup>
Chart Versions	E,C, Letter, Number, Chiddren, Polarized charts, 3D
Working distance	1-6 meters

Remote controlling	Distance ∅8m
Power Supply	100-240V AC, 60/50Hz
Dimension	590(W)*365(H)*60mm(D)
Weight	5.5KG()

- Standard Accessories
- Remote Control
  - Red-green glasses
  - 3D Stereo Polarized glasses: 2 pieces
  - U Disk
  - Hanging Bracket
  - AC-DC Adapter
  - Power Cable

Better Detail For Better Quality



LINK LCP-1000  
LCD  
Chart  
Projector

01923 233980  
sales@graftonoptical.com  
Grafton Optical

New Technologies And Powerful Functions  
Simple operation interface provides  
with accurate operation experience.

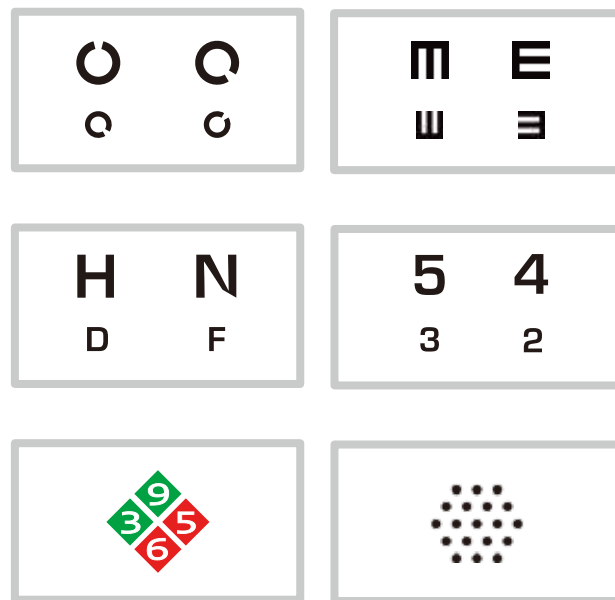


# LINK LCP-1000 LCD Chart Projector

LINK LCD Chart Projector LCP - 1000 has multiple extended functions, 23 inch LED backlit screen, polarized charts is provided for binocular test. Various kinds of tests meet the diverse needs of the measurement. Quick test list- Pick ten or less frequently used tests to establish your own quick test list. It can be connected with computer, DVD player or input with multi - media signal through VGA/AV/YPBPR/USB connections as a multi - media player. Excellent programming give full play to the features of CPU .

## Multi-functional charts meet different testing requestv

E charts, C charts, Letter Charts, Number Charts, Children Charts, Color blindness Charts

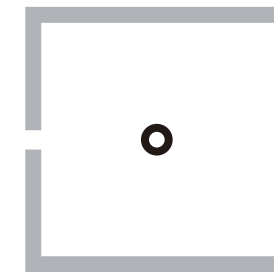


## Connection makes a complete work system

LCP-1000 can connect with digital phoropter DVT-1000, which you can control LCD Chart by panel of phoropter



## Polarized charts for binocular test



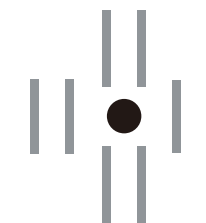
## External port on LCP-1000 provide for USB flash disk connection

Can run the au-tomatic update procedure  
Video playing and image browsing



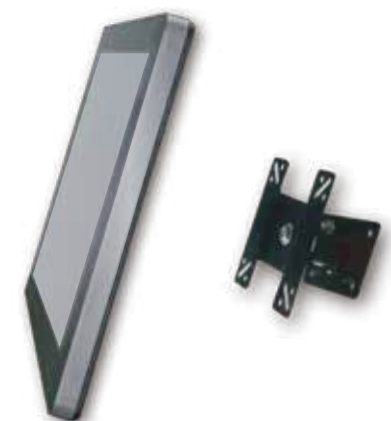
## 3D Binocular Balance Test and Stereo Visual Test

Intelligent 3D polarization vision chart is high grading and multifunctional product, besides it's ordinary visual test function, it can also display a lot of 3D polarization polarizing optic optotype.



## Easy mounting and operation

Wall and table bracket is provided according to customer's specific request



## Test distance is adjustable to meet your room space

1-6 meters distance is optional according to room space; it can help to save your space.

